



# Albany Court, Brunswick Road, Earlsdon

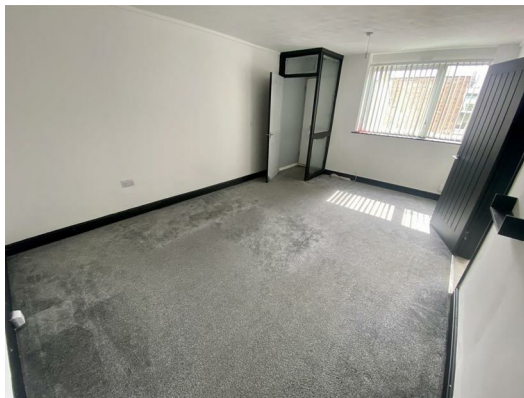
2 Bedroom Flat

**£129,950**



FOR SALE

**archer  
bassett**  
LETTINGS AND SALES



\* NO CHAIN \*This top floor, two double bedroom flat is within walking distance to Coventry City Centre and Coventry Train Station, benefiting from double glazing and electric heating throughout. Comprises of a spacious lounge internal porch, modern fitted kitchen with electric hob/oven, fully tiled bathroom with white suite, bath and electric shower. Other features include a balcony, communal gardens and a secure, designated garage.

#### Lounge/Diner

**5.20m x 3.48m (17'1" x 11'5")**

Double glazed window to front, lounge with carpet.

#### Kitchen

**3.10m x 3.00m (10'2" x 9'10")**

Double glazed window to front, modern fitted kitchen with range of wall and base units to include integrated coven and hob and two built in storage cupboards.

#### Bathroom

**2.00m x 1.90m (6'7" x 6'3")**

Modern fully tiled bathroom to include bath with electric shower over, W/C and hand wash basin.

#### Bedroom 1

**3.38m x 3.48m (11'1" x 11'5")**

Double glazed window to rear, spacious double with carpet and access to balcony.

#### Bedroom 2

**3.38m x 3.00m (11'1" x 9'10")**

Double glazed window to rear, spacious double with carpet.

#### Tenure - Leasehold

The agent has been informed that the property is offered leasehold however any interested party should obtain confirmation of this, along with any ongoing associated costs such as ground rent and service charges, via their own solicitor or legal representative. Any costs stated in these particulars have been provided by the vendor and have not been verified by the agent.

#### Viewings

Viewings are strictly by appointment only via Archer Bassett.

#### Agent Notes

1. Anti-Money Laundering (AML) Regulations – All named purchasers and anyone gifting funds will be asked to produce identification documentation before proceeding to instruction of solicitors and we would ask for your co-operation in order to proceed to agreeing the sale as soon as possible.
2. Source of Funds - All named purchasers and anyone gifting funds will be asked to produce evidence of the source of their funds before proceeding to instruction of solicitors.
3. These particulars do not constitute part or all of an offer or contract.
4. Any measurements indicated are intended for guidance only and as such must not be relied upon and any interested parties are advised to confirm any measurements before committing to any offer.
5. Archer Bassett has not tested any equipment, appliances, fixtures, fittings or services.

#### Important Notice

These particulars are intended only as a guide to prospective purchasers and do not constitute part of an offer or contract. Whilst every effort has been made to ensure the accuracy of the information provided, no representation or warranty is made as to its accuracy and interested parties should satisfy themselves by inspection or otherwise as to the correctness of each statement.

All measurements, floor areas, dimensions, distances and other details are approximate and should not be relied upon. Photographs, floor plans and maps are provided for illustrative purposes only and may not accurately represent the current condition, layout or boundaries of the property.

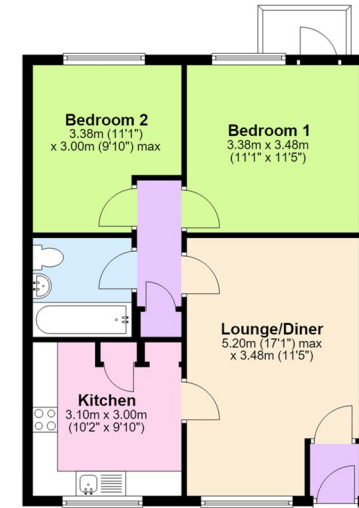
Archer Bassett has not tested any services, systems, appliances, equipment or facilities and therefore cannot verify that they are in working order or fit for purpose. References to planning permissions, building regulations, tenure, council tax, service charges, ground rent or any other matters should be independently verified by a purchaser's solicitor or other professional adviser.

Prospective purchasers are advised to undertake their own due diligence and seek independent professional advice before entering into any legal commitment. Neither the vendor nor the agent accepts responsibility for any loss arising from reliance on the information contained within these particulars.

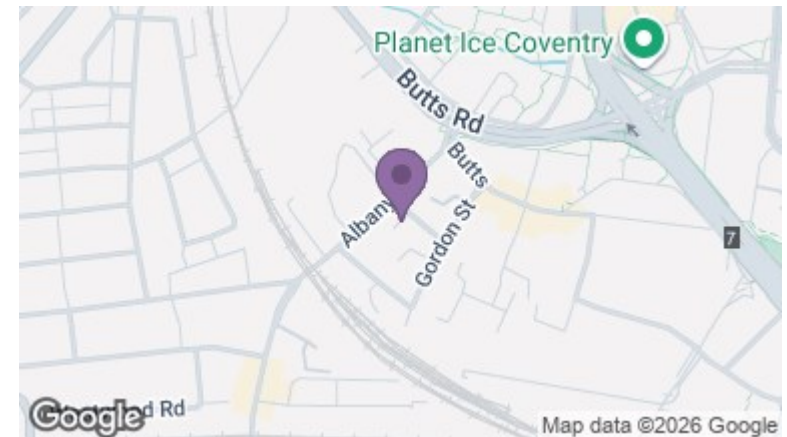
**Archer Bassett | 477 Holyhead Road Coventry CV5 8HU**

**024 7659 2255 | sales@archerbassett.co.uk | archerbassett.co.uk**

**Floor Plan**  
Approx. 56.3 sq. metres (605.6 sq. feet)  
(excluding Balcony)



Total area: approx. 56.3 sq. metres (605.6 sq. feet)



**FOR SALE**

**archer  
bassett**  
LETTINGS AND SALES

Energy Efficiency Rating		Current	Potential
Very energy efficient - lower running costs			
(92 plus)	A		
(81-91)	B		
(69-80)	C		78
(55-68)	D	55	
(39-54)	E		
(21-38)	F		
(1-20)	G		
Not energy efficient - higher running costs			
<b>England &amp; Wales</b>		EU Directive 2002/91/EC	