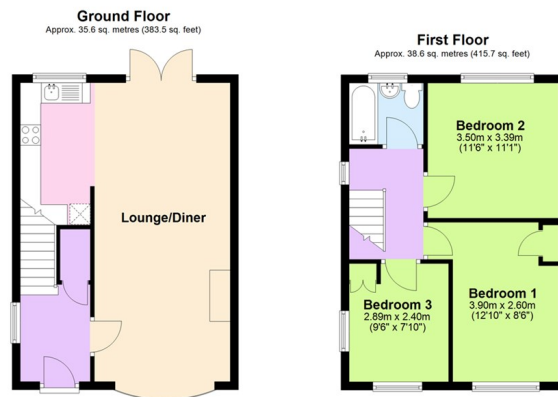


Sherington Avenue, Allesley, Coventry CV5 9HU
Offers In The Region Of £230,000

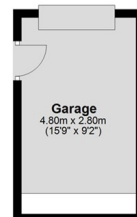
archerbassett
LETTINGS AND SALES

- THREE DOUBLE BEDROOMS
- MODERN KITCHEN
- WORKSHOP/STORAGE AREA TO THE REAR
- EXCELLENT LOCATION
- NO ONWARD CHAIN
- OPEN PLAN GROUND FLOOR
- LOW MAINTENANCE GARDENS
- NEW ROOF INSTALLED 2024
- ENERGY RATING PENDING

CHAIN FREE - NEW ROOF INSTALLED 2024 A well presented three bedroom home set in the desirable area of Allesley, close to local amenities with double glazing and central heating. Briefly comprising of spacious lounge/diner with French doors to garden, modern fitted kitchen with oven and ceramic hob. To the first floor are three double bedrooms, bathroom with white suite to include bath with shower over, W/C and hand wash basin. Other benefits include low maintenance gardens to front and rear and a useful workshop/storage area to the rear.



Garage
Approx. 13.4 sq. metres (144.7 sq. feet)



Total area: approx. 87.7 sq. metres (943.9 sq. feet)