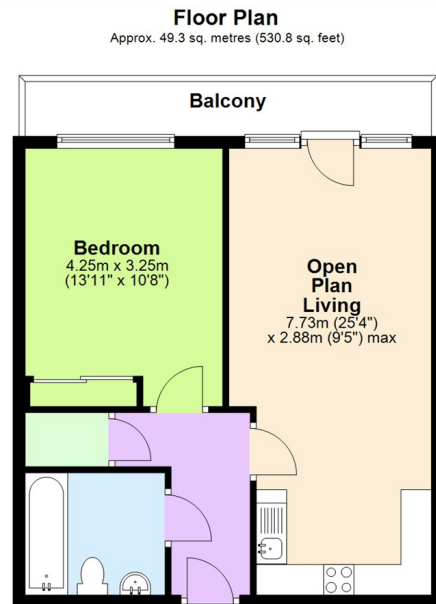


Osbourne House, Queen Victoria Road, Coventry CV1 3JD
Offers In Excess Of £128,000

archerbassett
LETTINGS AND SALES

- One Bedroom City Centre Apartment
- Spacious Lounge With Balcony
- Double Bedroom With Fitted Wardrobe
- Secure Entry Phone System
- A few Minutes Walk To The City Centre
- Open Plan Living
- Modern Fitted Kitchen
- Bathroom With White Suite
- Allocated Parking
- Long Lease 977 Years Remaining

Investment opportunity - currently achieving £9540 PA with scope to increase the rental income A spacious one bedroom apartment city centre apartment comprising of large lounge with patio doors leading onto a balcony, open plan fitted kitchen with ceramic hob/oven, washing machine, dishwasher, fridge and a modern white bathroom suite with thermostatic shower. Other features include secure entry phone system, allocated parking and electric heating. The apartment comes with a long lease with 977 years left remaining and must be viewed internally to be appreciated.



Total area: approx. 49.3 sq. metres (530.8 sq. feet)

This plan is for illustrative and guidance purposes only and should be used as such by any prospective purchaser. Whilst every attempt has been made to ensure the accuracy of this floor plan all measurements of rooms, windows, doors and any other items are approximate and no responsibility is taken by the Agent for any errors, omissions or misrepresentation.
Plan produced using PlanUp.