

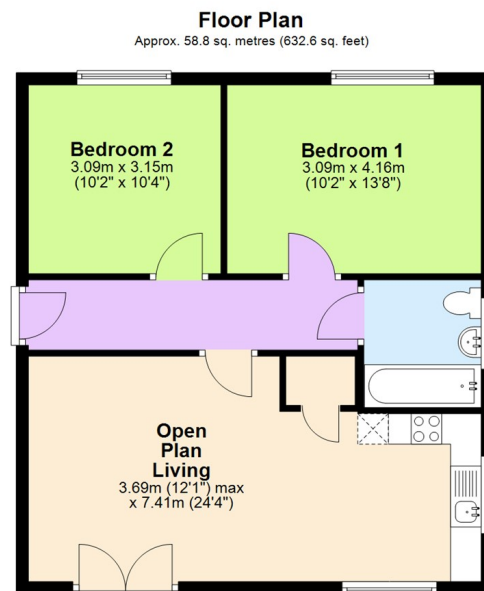


Firecrest Close, Whitmore Place, Coventry CV6 4RB
Offers Over £130,000

archerbassett
LETTINGS AND SALES

- Long Lease Of 996 Years
- Modern, Stylish And Well Presented Throughout
- Two Well Proportioned Bedroom
- Allocated Parking
- Eco Friendly Air Source Heat Pump
- Manageable Service Charge Of £895.06 Per Year
- Open Plan Lounge/Kitchen/Diner
- Bathroom With White Suite To Include Bath With Shower Over
- Secure Entry Phone
- Great Access To The Motorway Network

This property is offered for sale at 75% of the market value under the Section 106 Affordable Housing Scheme. A modern two-bedroom, third-floor apartment, ideal as an excellent and affordable first-time purchase. The property is well placed for an abundance of local amenities and offers easy access to the motorway network via the A444. Featuring an open-plan layout, the apartment has a bright and airy feel, providing modern, spacious living throughout and finished to a high standard. The accommodation comprises an open-plan lounge/kitchen/diner with tiled flooring. The kitchen includes a range of modern fitted wall and base units, incorporating an integrated oven and hob. There are two well-proportioned bedrooms and a stylish, part-tiled bathroom fitted with a white suite, including a bath with shower over and a heated towel rail. Additional features of this exceptionally well-presented home include energy-efficient heating via an electric heat pump, a secure entry phone system, and an allocated parking space, along with ample visitor parking. There are approximately 996 years remaining on the lease, and the service charge is approximately £895.06 per annum.



Total area: approx. 58.8 sq. metres (632.6 sq. feet)

This plan is for illustrative and guidance purposes only and should be used as such by any prospective purchaser. Whilst every attempt has been made to ensure the accuracy of this floor plan all measurements of rooms, windows, doors and any other items are approximate and no responsibility is taken by the Agent for any errors, omissions or misrepresentation.
Plan produced using PlanUp.