



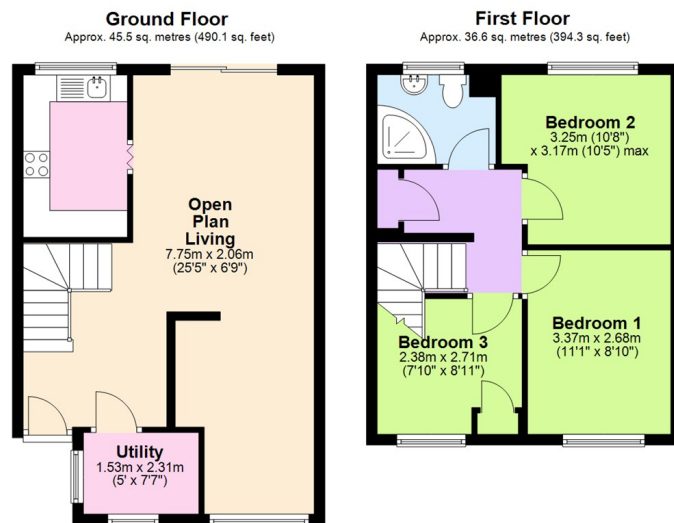
Hendre Close, Tile Hill, Coventry CV5 7AG  
Offers In The Region Of £225,000

archerbassett  
LETTINGS AND SALES



- THREE BEDROOM FAMILY HOME SITUATED IN A QUIET CUL-DE-SAC
- UTILITY ROOM
- FULLY TILED BATHROOM WITH WHITE SUITE
- ENCLOSED REAR GARDEN WITH PATIO & LAWN
- NO UPWARD CHAIN
- SPACIOUS OPEN PLAN LOUNGE / DINER
- FITTED KITCHEN
- BLOCK PAVED DRIVEWAY
- DOUBLE GLAZED & CENTRAL HEATED THROUGHOUT

This three double bedroom home is set in a cul-de-sac location and benefits from double glazing and gas central heating throughout. The ground floor has an open aspect with large through lounge/diner which was extended into the garage, the modern fitted kitchen has a range of light wood effect wall & base units and there also a good size & useful utility area just off the entrance hallway. To the first floor are three good size bedrooms and a fully tiled bathroom with white suite to include a corner bath with an electric shower over. Other features include a lawned rear garden with a patio area & shed and a block paved driveway to the front providing off road parking for two vehicles.



Total area: approx. 82.2 sq. metres (884.4 sq. feet)

This plan is for illustrative and guidance purposes only and should be used as such by any prospective purchaser. Whilst every attempt has been made to ensure the accuracy of this floor plan all measurements of rooms, windows, doors and any other items are approximate and no responsibility is taken by the Agent for any errors, omissions or misrepresentation.  
Plan produced using PlanUp.

