

SOLD BY  
STC

archer  
bassett  
LETTINGS AND SALES

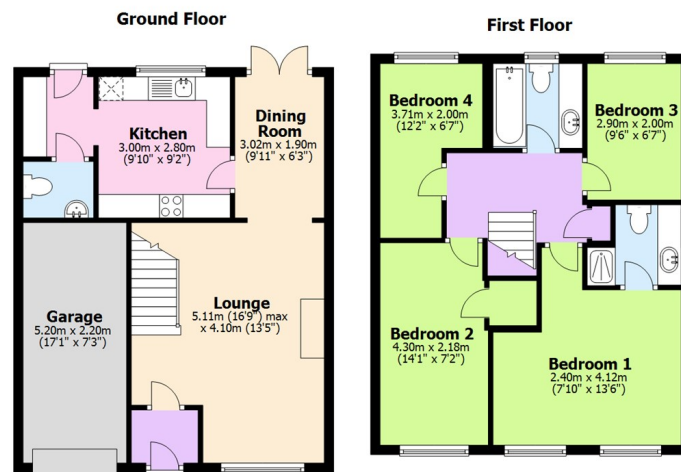


Joshua Close, Tile Hill, Coventry CV4 9DB  
Offers Over £245,000

archerbassett  
LETTINGS AND SALES

- NO UPWARD CHAIN
- CLOSE TO LOCAL AMENITIES
- ENSUITE
- CUL-DE-SAC LOCATION
- FOUR BEDROOMS
- GARAGE AND DRIVEWAY
- OPEN PLAN LOUNGE/DINER

**\*\*NO UPWARD CHAIN\*\*** A spacious four bedroom end terrace family home that is situated in a quite cul-de-sac within walking distance to local amenities and comes with double glazing & central heating throughout. Briefly comprising of internal entrance porch, spacious lounge/diner with feature fireplace and French doors leading to the garden. A fitted kitchen with a good range of wall & base units to include an integrated gas hob and electric oven, separate utility room with access to a downstairs W/C. To the first floor are four bedrooms with the main bedroom having an ensuite shower room with W/C & hand wash and the family bathroom comes with a white suite to include a bath with screen & shower over. Externally there is a small fore garden with driveway and access to garage and to the rear is a good size enclosed garden with patio and lawn. **ENERGY RATING C.**



This plan is for illustrative and guidance purposes only and should be used as such by any prospective purchaser. Whilst every attempt has been made to ensure the accuracy of this floor plan all measurements of rooms, windows, doors and any other items are approximate and no responsibility is taken by the Agent for any errors, omissions or misrepresentation.  
Plan produced using PlanUp.

