

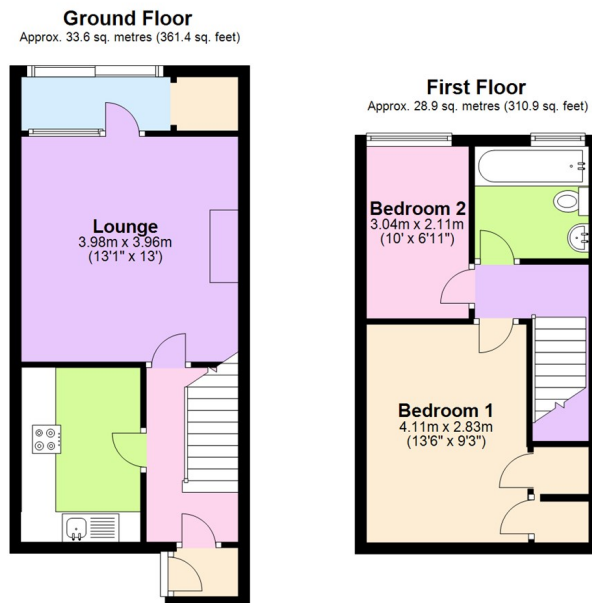


Old Church Green, Stechford, Birmingham B33 8QP
Offers In The Region Of £165,000

archerbassett
LETTINGS AND SALES

- POTENTIAL RENTAL INCOME OF £9000PA
- IDEAL FIRST TIME PURCHASE OR INVESTMENT
- ENCLOSED REAR GARDEN
- EXCELLENT LOCATION
- TWO DOUBLE BEDROOMS
- DRIVE TO THE FRONT

****NO ONWARD CHAIN **** A two bedroom mid terrace home with double glazing. The property is well situated close to Heartlands Hospital and local amenities. Briefly comprising of a fitted kitchen with a range of wall and base units, a spacious lounge with feature fireplace leading to a rear lean-to. To the first floor are two double bedrooms with the master having two built in storage cupboards, and a part tiled family bathroom featuring a white suite to include a bath with electric shower over, W/C and hand wash basin. Other benefits include an enclosed rear garden with patio and astro-turf and driveway to the front.



Total area: approx. 62.5 sq. metres (672.3 sq. feet)

This plan is for illustrative and guidance purposes only and should be used as such by any prospective purchaser. Whilst every attempt has been made to ensure the accuracy of this floor plan all measurements of rooms, windows, doors and any other items are approximate and no responsibility is taken by the Agent for any errors, omissions or misrepresentation.
Plan produced using PlanUp.