



Barkers Butts Lane, Coundon, Coventry CV6 1DZ
Offers Over £199,950

archerbassett
LETTINGS AND SALES

No Upward Chain - A well-proportioned three bedroom semi-detached family home with double glazing and central heating that is well placed for local amenities & public transport. There is a large through lounge / diner with bay window and feature fireplace, an extended fitted galley style kitchen with a range of wall and base units and to the first floor are two double bedrooms, one single bedroom and a fully tiled family bathroom with bath and shower over. Externally there is a part paved frontage and small lawn, with a lawned garden with patio to the rear.

Hallway
12'6" x 5'7" (3.80m x 1.70m)

Double glazed windows to front with wooden door.

Dining Room
11'6" x 11'10" (3.50m x 3.60m)

Double glazed bay window to front, laminate flooring and feature fireplace.

Lounge
11'10" x 9'11" (3.60m x 3.02m)

Double glazed patio doors to the rear, spacious lounge with laminate flooring and feature fireplace.

Kitchen
19'0" x 5'7" (5.80m x 1.70m)

Double glazed dual aspect windows, extended galley style kitchen with range of fitted wall and base units

Landing
8'11" x 7'7" (2.72m x 2.30m)

Double glazed window to side, staircase with carpet.

Bedroom 1
13'3" x 10'11" (4.05m x 3.33m)

Double glazed bay window to front, spacious with carpet.

Bedroom 2
12'0" x 10'9" (3.66m x 3.28m)

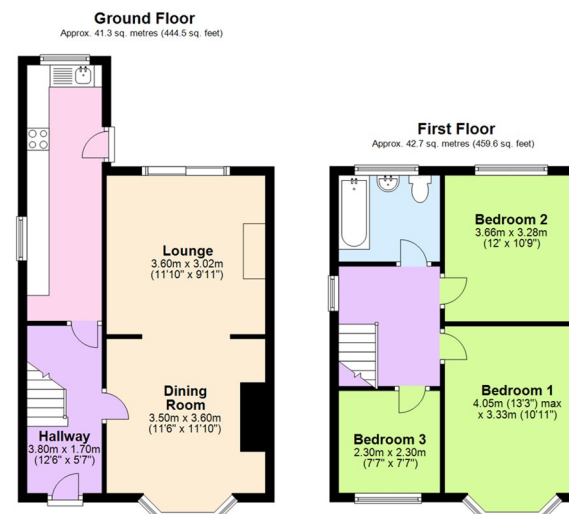
Double glazed window to rear, double room with carpet.

Bedroom 3
7'7" x 7'7" (2.30m x 2.30m)
Double glazed window to front, good size single bedroom

Bathroom
6'5" x 6'7" (1.96m x 2.00m)
Double glazed window to rear with privacy glass, white suite to include bath with shower over, W/C and hand wash basin.

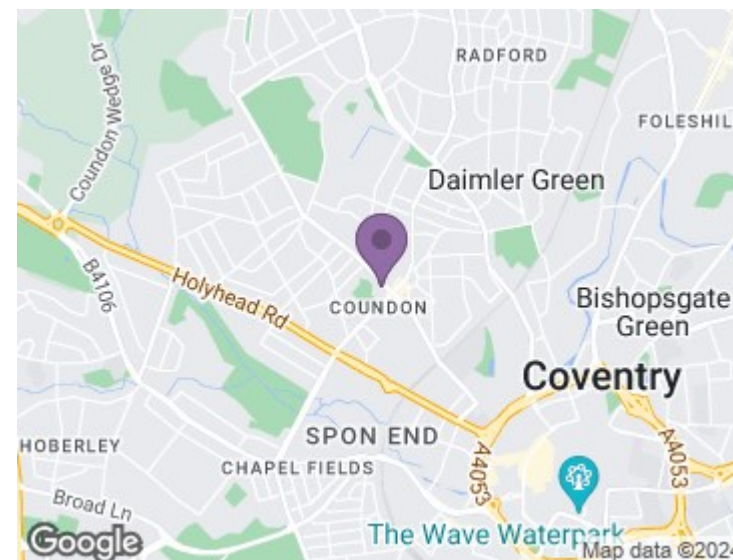
Tenure (Freehold)
The agent has been informed that the property is offered freehold however any interested party should obtain confirmation of this via their own solicitor or legal representative.

Viewing Arrangements
Viewings are strictly by appointment only via Archer Bassett.



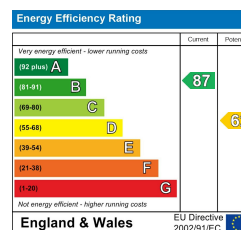
Total area: approx. 84.0 sq. metres (904.1 sq. feet)

This plan is for illustrative and guidance purposes only and should be used as such by any prospective purchaser. Whilst every attempt has been made to ensure the accuracy of this floor plan all measurements of rooms, windows, doors and any other items are approximate and no responsibility is taken by the Agent for any errors, omissions or misrepresentation.
Plan produced using PlanUp.



DISCLAIMER

The details for this property advert are believed to be accurate but not all items shown in the photographs may be included and interested parties must not rely upon this advert or any other statement as being a representation of fact and must satisfy themselves by inspection or otherwise to the correctness of each of them. Archer Bassett, or any of its employees, has authority to make or give any representation or warranty whatsoever in relation to the property. All verbal statements made in the course of negotiations are made on the same understanding. This advert does not form part of any contract not does it constitute property particulars.



67 Hertford Street, Coventry CV1 1LB

024 7623 7500

sales@archerbassett.co.uk

archerbassett.co.uk