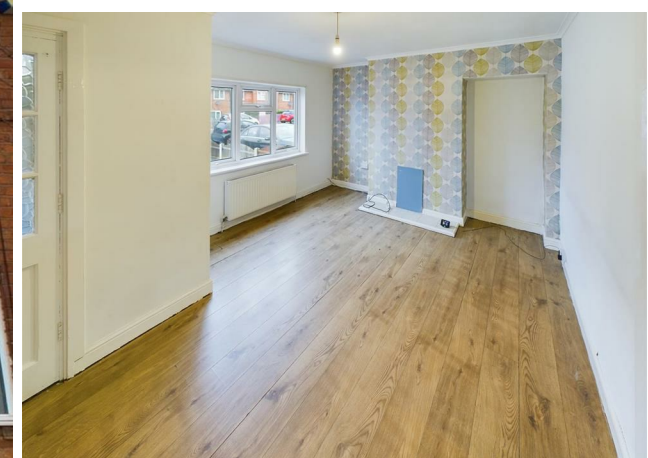


360°
VIRTUAL TOUR
ONLINE
VIEWING



Sunningdale Road, Tyseley, Birmingham B11 3QG
£199,950

archerbassett
LETTINGS AND SALES

****IDEAL FIRST TIME PURCHASE OR INVESTMENT**** A very well presented three bedroom mid terraced house with double glazing and central heating throughout.

Comprising of a spacious lounge with laminate flooring, downstairs part tiled bathroom with white suite to include bath, W/C and hand wash basin. A generously sized modern kitchen with a range of wall and base units and integrated electric hob and oven and to the first floor is three good sized bedrooms with the principal bedroom having a feature fireplace and built in storage cupboard. Other benefits include graveled frontage and lawned rear garden with patio area.

Lounge

11'5" x 14'6" (3.47m x 4.42m)

Double glazed window to front, spacious lounge with laminate flooring.

Kitchen

14'1" x 6'7" (4.30m x 2.00m)

Double glazed window to rear, large modern kitchen with range of wall and base units with integrated electric hob and oven.

Bathroom

7'10" x 4'8" (2.38m x 1.43m)

Double glazed window to rear with privacy glass, part tiled bathroom with white suite to include bath, W/C and hand wash basin.

Bedroom 1

7'11" x 7'5" (2.41m x 2.27m)

Double glazed window to front, single room with carpet.

Bedroom 2

10'11" x 7'10" (3.34m x 2.39m)

Double glazed window to front, small double room with carpet.

Bedroom 3

8'3" x 12'8" (2.52m x 3.87m)

Double glazed window to rear, good sized double room with carpet and feature fireplace.

DISCLAIMER

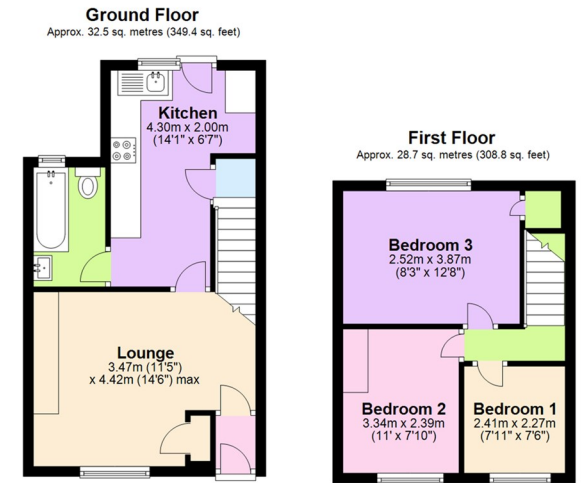
The details for this property advert are believed to be accurate but not all items shown in the photographs may be included and interested parties must not rely upon this advert or any other statement as being a representation of fact and must satisfy themselves by inspection or otherwise to the correctness of each of them. Archer Bassett, or any of its employees, has authority to make or give any representation or warranty whatsoever in relation to the property. All verbal statements made in the course of negotiations are made on the same understanding. This advert does not form part of any contract not does it constitute property particulars.

Tenure - Freehold

The agent has been informed that the property is offered freehold however any interested party should obtain confirmation of this via their own solicitor or legal representative.

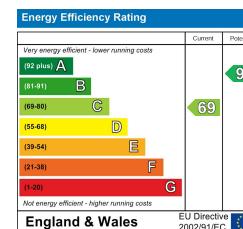
Viewings

Viewings are strictly by appointment only via Archer Bassett.



Total area: approx. 61.2 sq. metres (658.2 sq. feet)

This plan is for illustrative and guidance purposes only and should be used as such by any prospective purchaser. Whilst every attempt has been made to ensure the accuracy of this floor plan all measurements of rooms, windows, doors and any other items are approximate and no responsibility is taken by the Agent for any errors, omissions or misrepresentation.
Plan produced using PlanUp.



67 Hertford Street, Coventry CV1 1LB

024 7623 7500

sales@archerbassett.co.uk

archerbassett.co.uk