

360°
VIRTUAL TOUR

ONLINE
VIEWING



Cross Street, Stockingford, Nuneaton CV10 8HY
Offers Over £124,950

archerbassett
LETTINGS AND SALES

In need of refurbishment throughout, this three bedroom mid-terraced home offers great value and would make a great investment or a first time home for someone wanting a project. In the heart of popular Stockingford the property briefly comprises of double glazing and gas central heating throughout, two reception rooms, spacious kitchen, upstairs family bathroom and large gardens to the rear.

Hallway

12'10" x 2'11" (3.90m x 0.90m)
Entrance hallway with UPVC front door

Lounge

10'10" x 10'2" (3.30m x 3.10m)
Double glazed window to front, spacious with feature fireplace.

Lounge/Dining Room

10'10" x 13'5" (3.30m x 4.10m)
Double glazed window to rear, access to staircase.

Kitchen

11'10" x 8'10" (3.60m x 2.70m)
Double glazed window to rear and side with access to garden. Range of wall and base units and vinyl flooring.

Landing

2'4" x 6'7" (0.72m x 2.00m)
Carpeted landing.

Bedroom 1

6'7" x 13'9" (2.00m x 4.18m)
Double glazed window to front, spacious double room with built in storage cupboard.

Bedroom 2

11'1" x 10'9" (3.37m x 3.28m)
Double glazed window to rear, spacious double room with built in storage cupboard.

Bedroom 3

5'10" x 9'2" (1.78m x 2.80m)
Double glazed window to rear, carpeted single room.

DISCLAIMER

The details for this property advert are believed to be accurate but not all items shown in the photographs may be included and interested parties must not rely upon this advert or any other statement as being a representation of fact and must satisfy themselves by inspection or otherwise to the correctness of each of them. Archer Bassett, or any of its employees, has authority to make or give any representation or warranty whatsoever in relation to the property. All verbal statements made in the course of negotiations are made on the same understanding. This advert does not form part of any contract not does it constitute property particulars.

Rear Garden

Large paved area leading to lawn, large outhouse.

Bathroom

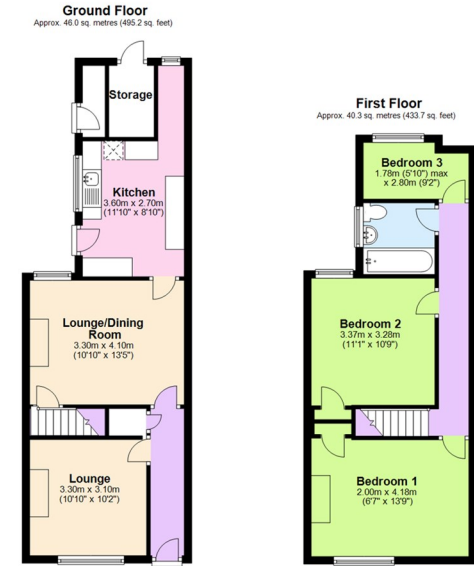
6'3" x 6'3" (1.90m x 1.90m)
Double glazed window to side with privacy glass, neutral suite with bath and electric shower over.

Tenure (Freehold)

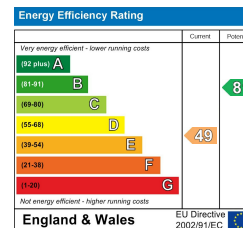
The agent has been informed that the property is offered freehold however any interested party should obtain confirmation of this via their own solicitor or legal representative.

Viewing Arrangements

Viewings are strictly by appointment only via Archer Bassett.



Total area: approx. 86.3 sq. metres (928.9 sq. feet)
This plan is for illustrative and guidance purposes only and should be used as such by any prospective purchaser. Whilst every attempt has been made to ensure the accuracy of this floor plan all measurements of rooms, windows, doors and any other items are approximate and no responsibility is taken by the Agent for any errors, omissions or misrepresentation. Plan produced using PlanItUp.



67 Hertford Street, Coventry CV1 1LB
024 7623 7500
sales@archerbassett.co.uk
archerbassett.co.uk